

© David McKee. Licensed by Metrostar for Andersen Press Ltd., London. www.elmer.co.uk

THE ELMER ADVENTURE

VISUAL GUIDE

Table of Contents

What is a Visual Guide?	page 3
What is a play?	page 3
What will it be like when I go to the theatre?	page 5
Who are the characters in The Elmer Adventure?	page 15
What happens in the story of The Elmer Adventure?	page 19
What should I be ready for in the play?	page 28
What different kinds of shows are there?	page 36



Hello!

Welcome to the Visual Guide for our performance of The Elmer Adventure. This guide will tell you about the show you are going to see. You might find this particularly helpful if you're a little nervous about your trip to the theatre, if you have any specific sensory sensitivities or if you've never been to see a theatre show before.

What is a play?



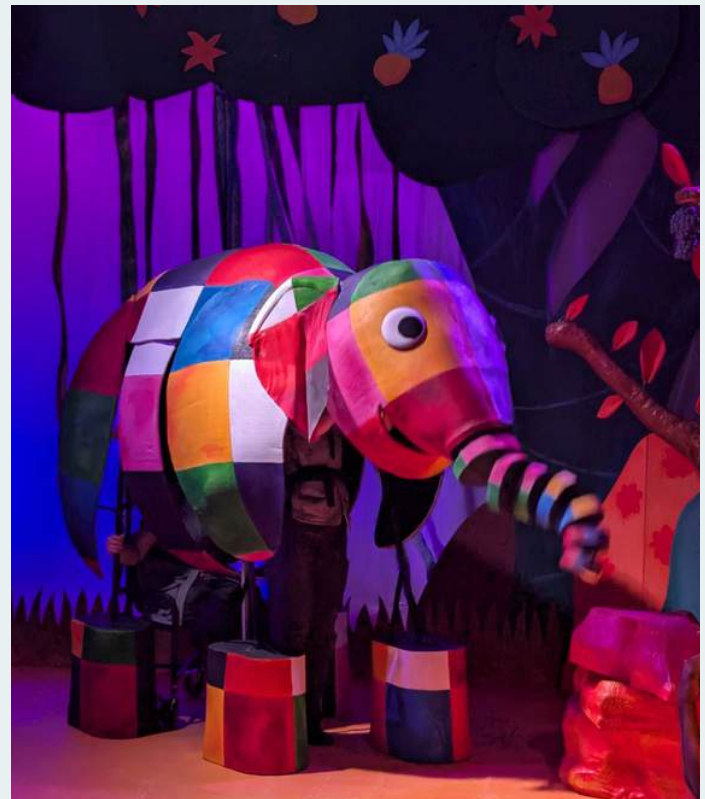
You are going to see a play called The Elmer Adventure. A **play** is a kind of story told by people called **performers**. The performers pretend to be different people in the play - these are called **characters**.

You will go and sit in a big room called a **theatre** with a lot of other people who want to see the play. The performers will wear special clothes called **costumes** and tell the story with singing, dancing and jokes.

In The Elmer Adventure, we tell three stories based on books that you might have read at home or at school, so you might already know who some of the characters are and what happens in the stories.



This is what The
Elmer book looks like.
Do you recognise it?



This is what The
Elmer Adventure
play will look like.
Does it look a bit like
the book?

This purple picture is the logo for Tall Stories.
Tall Stories is the name of the company that
puts on the play you are going to see.



What will happen when I go to the theatre?



The theatre is a building with a big, open room where
you watch the play. Some theatres have other activities
too so you may have visited your theatre before.



You will need a ticket to see the play. You may already have yours or you may have to ask someone who works at the theatre.

When you go into the theatre you will be in a big room called the **foyer** and in here will be a desk called the **Box Office**. Someone there will help you with your tickets.



The theatre may have a café and there will also be toilets you can use.



When it's time for the play to start, there may be an announcement to let you know you can go and find your seats.

Every theatre is a bit different but there will be lots of seats. This part of the theatre is called the **auditorium**.

There will be an area at the front called the **stage**. This is the place where the performers will tell the story.

You will have seats just for you and someone who works at the theatre will help you find where you will sit.



On the stage is something called a **set**, which helps the performers to pretend to be in the story. The set for The Elmer Adventure has a tent and trees from the jungle which makes the stage look like this:



The people watching the play are called the **audience**.

You may have to wait a bit while the rest of the audience finds their seats. This can be **busy and noisy** and you may have to move around to let people walk past you.

This may make you feel excited or impatient but everyone will settle down when the play starts.

While everyone sits down you will be able to hear some sounds from the jungle.



This will be your seat for the whole of the play. The play will last **nearly 1 hour**. If you need to get up and leave the room to take a break or use the toilet you can do that whenever you want.



When the play is about to start the room will get a little **darker** and the stage will get a bit brighter. This might feel a bit scary but this helps you see the performers better.



It's good not to be too loud in the theatre so that everyone can hear the performers. You might hear other people making noises sometimes and if you need to make a noise that's OK too.

Sometimes the performers will even ask you to answer a question or make a noise. It's fun to join in but you don't have to if you don't want to.



The performers will come onto the stage to start the play. When they come out they will look like this:



As they tell the stories they will dress up as different characters.

Amelia



Amelia is artistic and musical. You can see her playing the guitar here.

She has lots of fun in the jungle and she is very hopeful that they might meet the real Elmer.

Frankie



Frankie enjoys reading and science experiments.

Frankie read about a patchwork elephant in a magazine, but isn't sure if it is really Elmer.

Rob



Rob is a little more serious and gets embarrassed in front of the audience.

He wants to take care of his friends and wants everyone to be prepared for their trip home.

Even though he acts a little different from his friends he still loves Elmer and enjoys telling stories.

Petra



This is Petra. Petra's job is to be something called an **Understudy** which means you might see her playing any one of the characters.

Elmer



Rose



Wilbur



Rob, Frankie and Amelia dress up as different characters from the Elmer stories by turning their jackets inside-out. Here you can see them as Elmer, Rose and Wilbur.

What is The Elmer Adventure about?



The Elmer Adventure is a story about three friends who love the Elmer books and have gone on an adventure to try and find the real Elmer.

They sing a song that they sing every year on Elmer day.

Amelia, Rob and Frankie tell the story of the first Elmer book. They pretend to be elephants by using their arms as trunks.



Amelia pretends to be Elmer by turning her jacket inside out to show colourful patchwork.





Elmer decides he wants to be like the other elephants and he gets up while they are still asleep.



He finds a tree with grey berries. He shakes the berries off and rolls in them to turn himself grey.



Elmer goes back to the other elephants and no one recognises who he is.

The elephants are very quiet and serious so Elmer decides to go back to being silly and says 'boo' to startle them.

The elephants realise it must be Elmer and then it starts raining. The rain washes away the grey berry juice and shows Elmer's patchwork. The elephants decide to celebrate Elmer's joke every year by dressing up.





The friends dress up in colourful sashes and hats like the elephants on Elmer day. They decorate the campsite with tie-dye fabric.

After the story Rob starts to tidy up but then they play i-spy.

They hear an elephant trumpet in the distance when they start to sing. They decide to tell a whole story using singing in case the elephant likes it.

They tell a story about all the animals in the jungle getting a tune stuck in their heads.



Rob plays Elmer. Frankie and Amelia use different clothes they own to dress up as the different animals.

Lion



Monkeys



Tiger



Hippo



Crocodile



Rob goes to get more water from the stream.
Frankie and Amelia are supposed to light the fire
but get distracted by the sound of an elephant.
Amelia sees a glimpse of a trunk
in the trees.

Rob is annoyed that his friends
did not start the fire so he tells
the story of Elmer and the
Hippos, which is all about
teamwork.



In the story Elmer and his
cousin Wilbur convince the
elephants to help the Hippos
move rocks out of their river.

During this story the
performers will ask you to
pretend to be the Hippos.
You can join in if you'd like!





After the story, Rob argues with Frankie and Amelia and he says that Elmer isn't real.

He stays up late sitting by the fire and planning their trip home.

When Rob starts to fall asleep Elmer comes out of the jungle.





Rob is excited to see Elmer and they sing and dance together. When Rob feels sleepy again Elmer gives him a patchwork teddy bear.

When Rob wakes in the morning he remembers meeting Elmer and sings a song. He tells Frankie and Amelia about Elmer and they think he was dreaming. Rob can't find the teddy, so agrees that it must have been a dream, and apologises to Amelia for the argument.

They then pack up their things ready to leave when Rob finds the patchwork teddy.



What is going to happen in the play?

You've seen how the stage looks when you arrive, but some of the set can change. Some of the rocks and vines will get moved around by the performers.



During the show sometimes the lights will get **brighter or darker** or change colour.



There will be music and songs. Sometimes after a song people might clap and make **noise**.



Sometimes the performers will ask a question that you can answer, or they may ask you to join in by making a noise or doing an action. It's fun to join in but you don't have to if you don't want to. When this happens it can be **very noisy!**



During the second story the performers might throw one or more **big bouncy balls into the auditorium**. It's OK to throw the balls back but you don't have to touch them if you don't want to. They will also pop a **party popper** which might be a quick loud noise.

Near the end of the play the performers will **spray water** into the audience with water pistols. If you are sat near the stage you might get a little bit **wet**.

At both these times the people near you might be very excited and **loud**.



Sometimes something that happens in the play may make you feel sad or worried. It's OK to have these feelings and it's good to remember that the end of the play will be happy.



At the end of the play the performers will all stand together. Everyone will clap and it will be **very loud**. If you think the performers did a good job you can clap too - clapping is like saying thank you to the performers. This is called **applause**.



After the performers exit the stage it is time for everyone to leave the theatre. This will be **busy and noisy**, because everyone will still be excited about seeing The Elmer Adventure.



Different ways you can see the play

You might be seeing a special version of the show called a Relaxed Performance or a show with Audio Description or British Sign Language (BSL) Interpretation.



In a Relaxed Performance the room won't be as dark and the sound won't be as loud. The other people watching the show may be making more noise and moving around more. The performers might stay on the stage the whole time - but if one of them comes into the auditorium, they won't come near you.



In an Audio Described performance you can get headphones and listen to someone describe what the stage looks like and what the performers are doing.



In a BSL performance someone called an interpreter will be on stage together with the performers. The interpreter will translate what the performers say into British Sign Language so that audience members who use BSL can understand what is happening in the play.

You may also be going to a Touch Tour. A Touch Tour will happen at the theatre before the play.



This is so you can see the stage, the set and costumes up close and touch some of them. One of the performers or someone who works at the theatre will let you go up on the stage and help you to look at and touch different things from the play.

Touch Tours are really helpful if you are visually impaired or if you would feel happier about seeing the play if you know what it's going to look like first.

Enjoy the show!



Tall Stories
68 Holloway Road
London N7 8JL

020 8348 0080
tallstories.org.uk



@TallStoriesTheatre



@TallStories



@TallStoriesLive